

## Media Instruction Sheet

4232 Dark Textile Transfer Paper matt

**PLEASE READ INSTRUCTIONS THOROUGHLY BEFORE BEGINNING!**

**Important: DO NOT USE INKJET TRANSFER PAPER WITH A LASER PRINTER.**  
Doing so will result in permanent damage to the laser printer.

### GENERAL INFORMATION



With help of this Transfer Paper you can design individual clothing and personalized gifts in a simple way. Transfer your favorite design, logo or photograph onto T-shirts, mouse-pads, cotton bags and more. Following this step by step instruction you will reach an optimal result.

#### Product Handling

- Avoid fingerprints on the coated side before and after printing.
- Curled or folded sheets should not be used.
- Do not scratch the printable surface.
- Avoid exposure to moisture, high temperature and high humidity that could affect drying time and image quality.

#### General Printing Procedure

- Load the paper into your printer, matt side is coated side, backside shows a blue square print - Front load printers -> load printable side down (see ①) - Top load printers -> load printable side facing you (see ②)
- Follow the printer settings listed below for your printer (printer settings could vary depending on your version of your printer driver).
- Drying time will vary depending on the printer, ink brand, ink coverage, and room conditions (low temperature and high humidity can increase drying time).
- Store unused paper in the original package. Keep the open package in a cool, dry place. Do not store printed images or open packages in areas subject to high temperatures, high humidity and/ or direct sunlight. Note that printed colors may change if storage recommendations are ignored.

### STEP ① PRINTING AND PREPARING IMAGE

- Referring to the below listed "Recommended Printer Settings" this paper can be used with any inkjet printer. The graphic must be printed as normal image viewing (not as mirror image). If your printer mirrors automatically please mirror twice until normal image viewing is reached again (see illustration ① page 2).
- Single sheet feeding is recommended. Make sure that the paper is straight and does not have any bent or creased corners (see illustration ② page 2).
- If necessary size your image before printing.
- Before printing final image, produce on economy grade paper to test for layout / design.
- Important: After printing please let the print dry for at least 5 – 10 minutes. DO NOT TOUCH THE PRINTED SURFACE. Touching the surface when the print is not dry may damage the coating and the image.
- Even if you print more than one sheet always use single sheet feeding and keep them separated for at least 10 minutes until the prints are completely dry.

### STEP ② PRINT SETTING:

- Only use original ink recommended by your inkjet printer manufacturer.
- Only use the standard ink set. Do not use photo ink (if applicable).
- Please refer to the detailed printer setting section at the end of the instruction sheet.
-

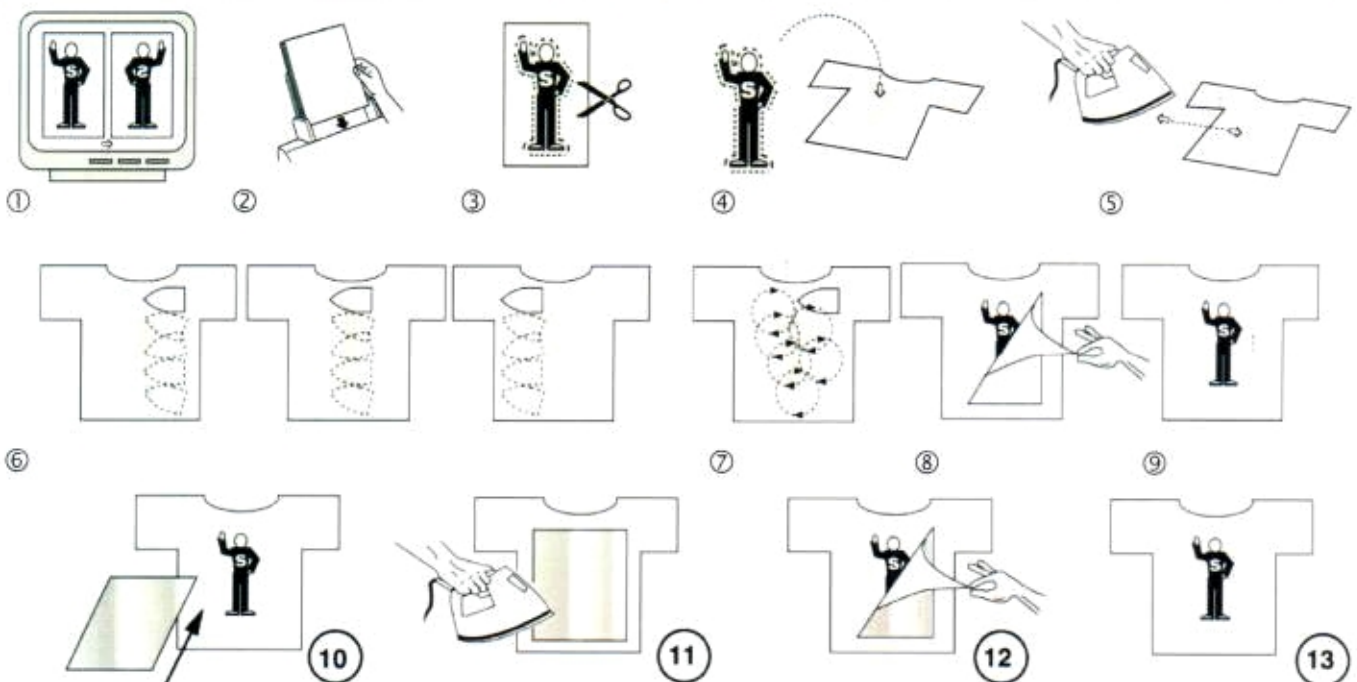
### STEP 1 PREPARING YOUR FABRIC FOR TRANSFER:

- All fabric should be pre-washed. Washing removes all impregnations present at the fabric and other auxiliary materials, which could lead to a bad adhesion of transferred pictures. Fabric should be cotton or cotton/poly blend. Canvas is also acceptable. Best natural results are achieved with dark or black colored fabric. Do not use white or bright colored fabric.

### STEP 2 - THE TRANSFER PROCESS:

- Iron on flat, hard, heat resistant surface (strong cardboard for example). **DO NOT USE IRONING BOARD!**
- Preheat your iron 5 to 8 minutes on highest possible setting (linen setting). **DO NOT USE STEAM SETTING!**
- Some irons get hotter than others. These instructions are made for an average iron. Test your iron by ironing a sheet of white plain paper under the same conditions as for the transfer. Your iron might be too hot if the paper becomes yellowish.
- Cut out non-printed area leaving  $\frac{1}{4}$  to  $\frac{1}{2}$  inch margin to the border. (see illustration 3). Round off edges to avoid corner liftoff after washing.
- Make sure the garment is completely flat and wrinkle free. Iron first if necessary to ensure flatness.
- Remove backing paper by carefully tearing a corner and peeling away from the face/image. Place transfer paper with design facing upwards in desired position on fabric (see illustration 4). Cover image with enclosed overlay paper. Start ironing with straight, non-stop motions from top to bottom and side to side by using even high body pressure (see illustration 5 below). Use the hot center of the iron to reach all areas, especially all corners and edges. Make sure that the whole image has been ironed (see illustration 6 and 7).
- The complete transfer time depends on the size of your image. As guideline – iron for full page 180 sec,  $\frac{1}{2}$  page 90 sec,  $\frac{1}{4}$  page 30 seconds. Irons with steam holes on the surface need a longer transfer time.
- Follow the recommended transfer times. If the transfer time is too short and the transfer media does not adhere to the receiver material the image could come off partially or in full during the washing process. If the transfer time is too long or too much pressure is applied it is possible that the image becomes yellowish.

### ILLUSTRATION OF THE TRANSFER PROCESS



### STEP 3 - REMOVE THE OVERLAY PAPER - COMPLETE THE TRANSFER:

- Let the transfer paper cool down completely
- Lift the overlay paper (see illustration 12)
- Your transfer is complete. (see illustration 13 below)

#### WASHING INSTRUCTIONS:

- Fabrics should be machine washed inside out (separately for the first time only) in cool or cold wash setting with a commercial available washing detergent. Wait at least 24 hours before washing.
- No bleach
- Immediately remove garments from washer.
- Air-drying ( transfer-print outside)
- Tumble dry at warm settings (transfer print inside)
- To re-iron the transfer after washing and drying place the release paper onto the transfer print. - Iron the transfer for 10-20 seconds - **Never iron an unprotected transfer print.**
- Before removing the release paper let it cool down completely.

#### RECOMMENDED PRINTER SETTINGS\*

##### EPSON

Media Type	Plain Paper
Print Quality	Fine/ Quality – 720/1440/2880 dpi

##### HEWLETT PACKARD

Paper Type	Plain Paper
Print Quality	Best

##### CANON

Media Type	T-shirt Transfer
Print Quality	Default settings

##### LEXMARK

Media Choice	Iron-on Transfer
Print Quality	Default settings

\*Printer settings refer to the latest printer drivers available. Recommended printer settings are based on achieving optimal print quality for a photographic type image. For different types of application, different printer settings may apply. This Transfer Paper is a speciality product and slide color variations are normal and within specifications.

#### Trouble Shooting Guide

- **Backing paper does not peel off easily** : Tear edge to begin peeling process.
- **Colors are bleeding / feathering**: Reduce amount of ink coverage in the printer settings or do not expose to moisture.
- **Seems to have cracks and edges are peeling**: Follow the instructions carefully – use strong pressure, the right amount of heat, and the right length of ironing time. Remember large images need more time.
- **Edge lift off**: Make sure the edges are rounded. Sharp edges have tendency to lift off especially after multiple washes.