



Test Report

Applicant	Hangzhou Coditeck Digital Co., Ltd.
Address	No.172 East Xiao Shao Road, Xiao Shan District, Hang Zhou, China
Sample Name	Barcode ribbon
Sample Received Date	Sep 4, 2018
Test Period	Sep 5, 2018 ~ Sep 10, 2018
Test Requirement	To determine the certain Hazardous Substances of the submitted sample according to the requirements of RoHS Directive 2011/65/EU (the European Parliament and the Council's Restriction on the use of certain Hazardous Substances in electrical and electronic equipment) and its amendment (EU) 2015/863.

Test Item(s)	Test Result(s)
Lead (Pb), Cadmium (Cd), Mercury (Hg), Hexavalent Chromium (Cr ⁶⁺), PBBs, PBDEs Content	See Test Results
Phthalates Content	See Test Results

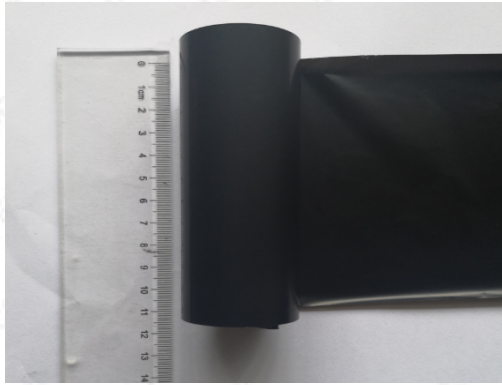
Complied by Yoko Ye Inspected by Kale Zhang Authorized by Mark Li
Mark Li/ Lab Manager



Test Component(s):

No.	Sample Serial No.	Test Component(s)
1	TR20182425002	Black solid

Photo(s):



TR20182425



Lead (Pb), Cadmium (Cd), Mercury (Hg), Hexavalent Chromium (Cr⁶⁺), PBBs, PBDEs Content

Test Method: Pb, Cd : IEC 62321-5:2013; Hg: IEC 62321-4:2013; Cr⁶⁺, PBBs, PBDEs: IEC 62321:2008

Test Item(s)	Limit	MDL	Unit	Test Result(s)
				Black solid
Lead(Pb)	1000	5	mg/kg	N.D.
Mercury(Hg)	1000	5	mg/kg	N.D.
Hexavalent Chromium(Cr ⁶⁺)	1000	5	mg/kg	N.D.
Cadmium(Cd)	100	5	mg/kg	N.D.
<u>Sum of Polybrominated Biphenyls (PBBs)</u>	1000	--	mg/kg	N.D.
Monobromobiphenyl		10	mg/kg	N.D.
Dibromobiphenyl		10	mg/kg	N.D.
Tribromobiphenyl		10	mg/kg	N.D.
Tetrabromobiphenyl		10	mg/kg	N.D.
Pentabromobiphenyl		10	mg/kg	N.D.
Hexabromobiphenyl		10	mg/kg	N.D.
Heptabromobiphenyl		10	mg/kg	N.D.
Octabromobiphenyl		10	mg/kg	N.D.
Nonabromobiphenyl		10	mg/kg	N.D.
Decabromobiphenyl		10	mg/kg	N.D.
<u>Sum of Polybrominated Diphenylethers (PBDEs)</u>	1000	--	mg/kg	N.D.
Monobromodiphenyl ether		10	mg/kg	N.D.
Dibromodiphenyl ether		10	mg/kg	N.D.
Tribromodiphenyl ether		10	mg/kg	N.D.
Tetrabromodiphenyl ether		10	mg/kg	N.D.
Pentabromodiphenyl ether		10	mg/kg	N.D.
Hexabromodiphenyl ether		10	mg/kg	N.D.
Heptabromodiphenyl ether		10	mg/kg	N.D.
Octabromodiphenyl ether		10	mg/kg	N.D.
Nonabromodiphenyl ether		10	mg/kg	N.D.
Decabromodiphenyl ether		10	mg/kg	N.D.

Remarks:

1. MDL = Method Detection Limit
2. N.D. = Not detected (<MDL)



Phthalates Content

Test method: EPA 3550C:2007, EPA 8270D: 2007

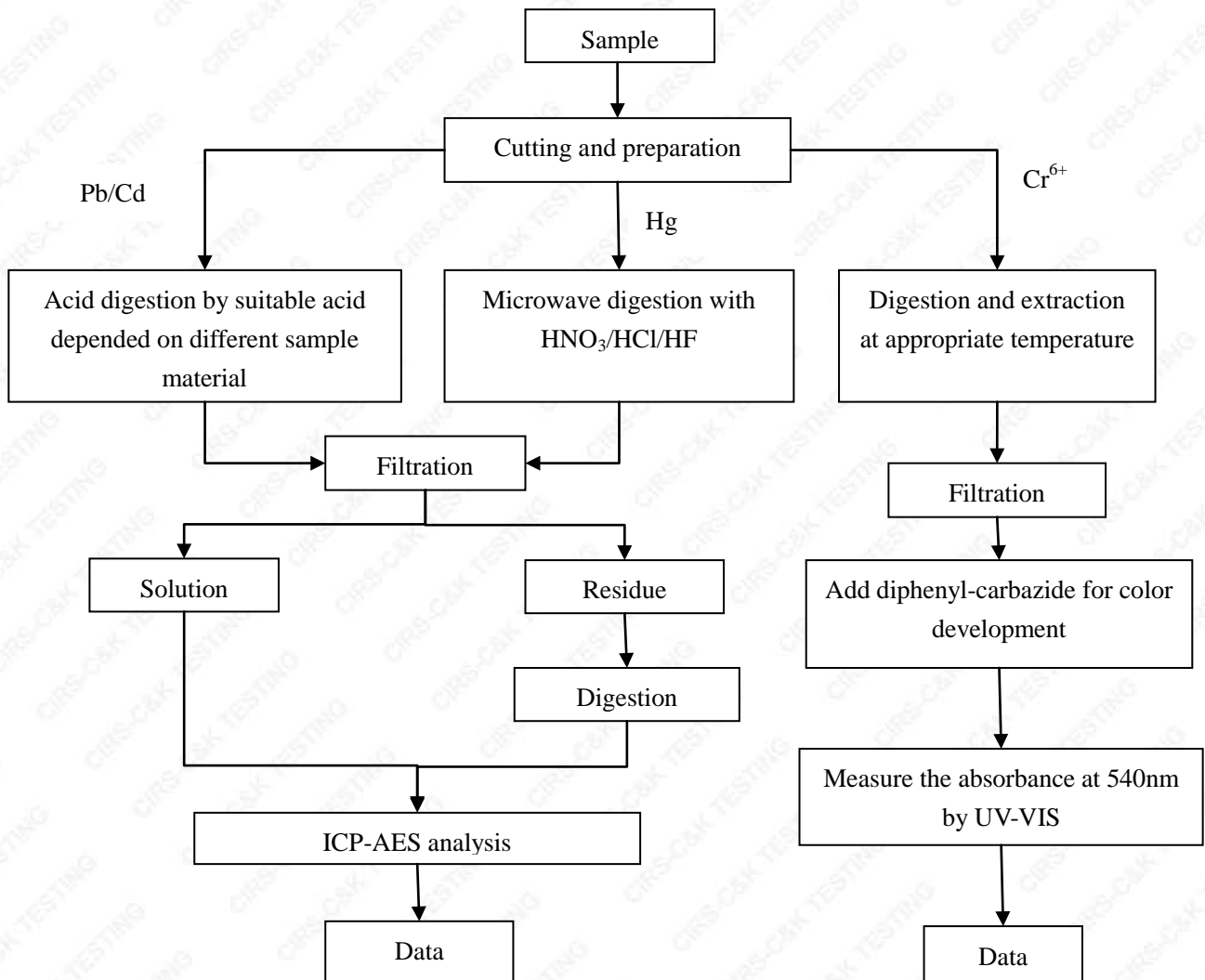
Test Item(s)	CAS No.	Limit	MDL	Unit	Test Result(s)
					Black solid
Dibutyl phthalate (DBP)	84-74-2	1000	10	mg/kg	N.D.
Bis (2-ethyl(hexyl)phthalate) (DEHP)	117-81-7	1000	10	mg/kg	N.D.
Benzyl butyl phthalate (BBP)	85-68-7	1000	10	mg/kg	N.D.
Diisobutyl phthalate (DIBP)	84-69-5	1000	10	mg/kg	N.D.

Remarks:

1. MDL = Method Detection Limit
2. N.D. = Not detected (<MDL)

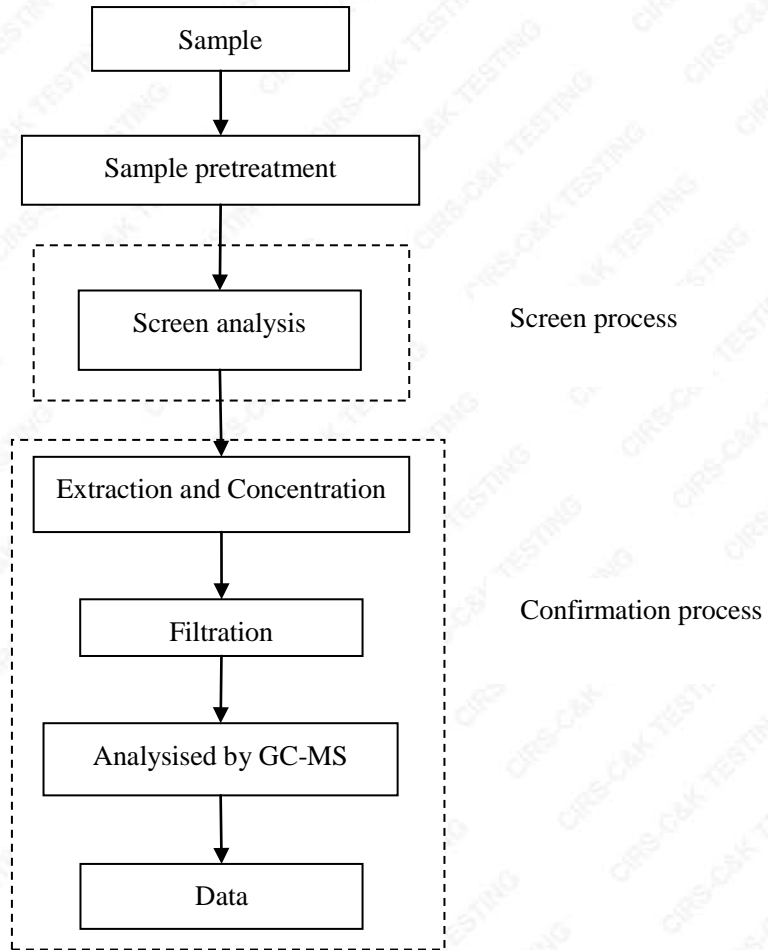


Test Flow Chart for the determination of Pb, Cd, Hg, Cr⁶⁺



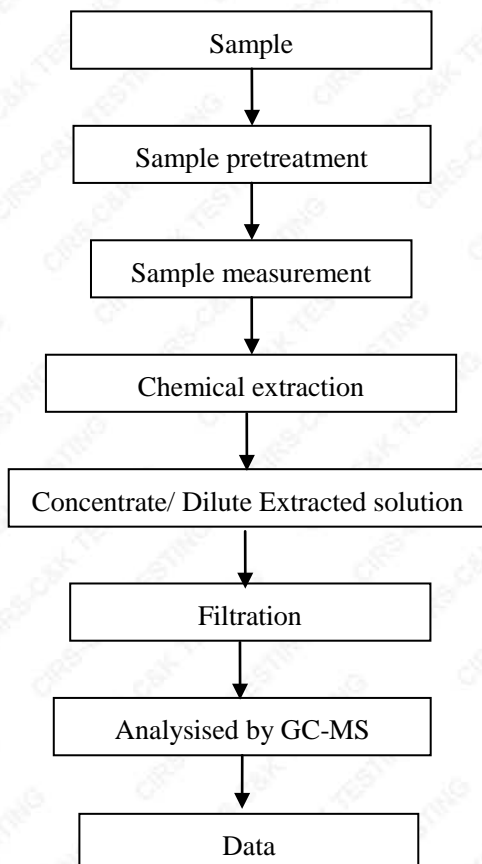


Test Flow Chart for the determination of PBB/PBDE





Test Flow Chart for the determination of Phthalates Content



The end of report